



Designation: C846 – 16 (Reapproved 2021)

## Standard Practice for Application of Cellulosic Fiber Insulating Board for Wall Sheathing<sup>1</sup>

This standard is issued under the fixed designation C846; the number immediately following the designation indicates the year of original adoption or, in the case of revision, the year of last revision. A number in parentheses indicates the year of last reapproval. A superscript epsilon ( $\epsilon$ ) indicates an editorial change since the last revision or reapproval.

### 1. Scope

1.1 This practice covers the requirements for storing, handling, and application of cellulosic fiber insulating board products.

1.2 The values stated in inch-pound units are to be regarded as standard. The values given in parentheses are mathematical conversions to SI units that are provided for information only and are not considered standard.

1.3 *This standard does not purport to address all of the safety concerns, if any, associated with its use. It is the responsibility of the user of this standard to establish appropriate safety, health, and environmental practices and determine the applicability of regulatory limitations prior to use.*

1.4 *This international standard was developed in accordance with internationally recognized principles on standardization established in the Decision on Principles for the Development of International Standards, Guides and Recommendations issued by the World Trade Organization Technical Barriers to Trade (TBT) Committee.*

### 2. Referenced Documents

2.1 *ASTM Standards:*<sup>2</sup>

**C208** Specification for Cellulosic Fiber Insulating Board

**D1554** Terminology Relating to Wood-Base Fiber and Particle Panel Materials

2.2 *Federal Specifications:*

**FF-N-105-B** with Interim Amendment 4 Nails, Brads, Staples and Spikes: Wire Cut and Wrought<sup>3</sup>

**UU-B-790-A** Building Paper, Vegetable Fiber: (Kraft, Waterproofed, Water Repellent and Fire Resistant)<sup>3</sup>

<sup>1</sup> This practice is under the jurisdiction of ASTM Committee C16 on Thermal Insulation and is the direct responsibility of Subcommittee C16.40 on Insulation Systems.

Current edition approved March 1, 2021. Published April 2021. Originally approved in 1976. Last previous edition approved in 2016 as C846 – 16. DOI: 10.1520/C0846-16R21.

<sup>2</sup> For referenced ASTM standards, visit the ASTM website, [www.astm.org](http://www.astm.org), or contact ASTM Customer Service at [service@astm.org](mailto:service@astm.org). For *Annual Book of ASTM Standards* volume information, refer to the standard's Document Summary page on the ASTM website.

<sup>3</sup> Available from Standardization Documents Order Desk, DODSSP, Bldg. 4, Section D, 700 Robbins Ave., Philadelphia, PA 19111-5098, <http://www.dodssp.daps.mil>.

### 3. Terminology

3.1 *Definitions of Terms Specific to This Standard:*

3.1.1 *exterior finish*—the shingle, lap, or panel siding material, masonry veneer, or stucco applied over the sheathing as a protective, decorative exterior finish of the building.

3.1.2 *fasteners*—nails, staples, or screws used for application of the sheathing.

3.1.3 *framing members*—those portions of the studs, headers, bracing, and blocking which serve to receive the sheathing. Framing members can be wood or metal.

3.1.4 *regular wall sheathing*—described in Definitions **D1554** and Specification **C208**. It is 4 ft (1.22 m) wide with square-cut edges on all sides and ½ in. (12.7 mm) in thickness.

3.1.5 *structural wall sheathing*—described in Definitions **D1554** and Specification **C208**. When installed in accordance with Section 7, it is considered a structural sheathing providing adequate racking resistance. It is 4 ft (1.22 m) wide and ½ in. (12.7 mm) or 25/32 in. (19.8 mm) in thickness with square-cut edges on all sides.

3.1.6 *vertical application*—sheathing applied with the long edges parallel to the studs.

### 4. Significance and Use

4.1 This standard provides recommendations for the installation in a safe and effective manner. Actual conditions may vary greatly, and additional care should be taken to ensure a safe and effective installation.

4.2 This standard presents requirements that are general in nature and considered practical. They are not intended as specific recommendations. The user should consult the manufacturer for recommended application methods and procedures.

4.3 This standard does not address the applicability of regulatory limitations. This is the responsibility of the user.

### 5. Materials

5.1 *Sheathing* shall conform to Specification **C208**.

5.2 *Nails* for application of sheathing to wood framing shall conform to Federal Specification FF-N-105-B, including Interim Amendment 4, and shall be in accordance with **Table 1**.



**TABLE 1 Nail Dimensions**

Sheathing Thickness, in. (mm)		Galvanized Steel Roofing Nails	Common Nails
1/2 (12.7)	Gage	11	11 1/2 (6d)
	Length, min, in. (mm)	1 1/2 (38.1)	2 (50.8)
	Head diameter, min, in. (mm)	7/16 (11.1)	17/64 (6.75)
	Wire diameter, min, in. (mm)	0.120 (3.06) <sup>A</sup>	0.1130 (2.87)
25/32 (19.8)	Gage	11	10 1/4 (8d)
	Length, min, in. (mm)	1 3/4 (44.5)	2 1/2 (63.5)
	Head diameter, min, in. (mm)	7/16 (11.1)	9/32 (7.14)
	Wire diameter, min, in. (mm)	0.120 (3.06) <sup>A</sup>	0.131 (3.33)

<sup>A</sup> Prior to galvanizing.

**5.3 Staples** for application of 1/2-in. and 25/32-in. sheathing to wood framing shall meet the following requirements:

Gage	16
Thickness, min, in. (mm)	0.057 (1.45)
Width, min, in. (mm)	0.063 (1.59)
Length, min, in. (mm)	1 1/2 (38.1)
Crown, min, in. (mm)	7/16 (11.1)
Points	chisel point divergent point divergent chisel point

**5.4 Screws** for application of 1/2-in. and 25/32-in. sheathing on 14-gage (0.075-in.) (1.90-mm) to 20-gage (0.036-in.) (0.91mm) steel studs shall meet the following requirements:

Head type	bugle head
Head diameter, min, in. (mm)	5/16 (7.94)
Length, min, in. (mm)	1 1/4 (31.8)
Major diameter, in. (mm)	9/64 (3.57)
Minor diameter, in. (mm)	7/64 (2.78)
Point	drill point

**5.5 Framing Members** shall be of such size and quality as to be structurally adequate for the type of building being constructed.

**5.5.1 Stud spacing** shall be 16 in. (0.41 m) or 24 in. (0.61 m) on center depending on code requirements.

## 6. Storage

**6.1 Sheathing** shall be stored flat, and supported and protected from direct contact with the ground. Sheathing shall not be stored in a heated warehouse and shall be allowed to come to equilibrium at job site conditions prior to application. Sheathing should be protected from rain prior to installation.

## 7. Application (see Table 2)

**7.1 Vertical Application** (see Fig. 1)—Apply 4-ft (1.22-m) wide by 1/2-in. (12.7-mm) or by 25/32-in. (19.8-mm) sheathing vertically with long edges parallel to the vertical studs. Center all joints over the framing members with a 1/8-in. (3.18-mm) gap between edges. Leave a 1/8-in. gap at doors, windows, and horizontal joints. Sheathing should extend from sill to plate. If not, headers for adequate nailing should be provided at all horizontal joints. Apply fasteners for 1/2-in. or 25/32-in. material using roofing nails, common nails (5.2) or staples (5.3) for wood framing and screws (5.4) for metal framing. Apply fasteners to intermediate framing members first. For wood framing, space fasteners 6 in. (152 mm) (Note 1) on center. Apply perimeter fasteners 3 in. (76 mm) (Note 1) on center and a minimum of 3/8 in. (9.5 mm) from the edge. Apply staples (5.3) vertically with the crown parallel to the framing member. Drive fasteners flush with the sheathing surface, but do not countersink. For metal framing, space the fasteners 5 in. (127 mm) around the perimeter of the sheets and 10 in. (254 mm) into intermediate framing.

NOTE 1—When bracing strength is provided separately, intermediate fasteners may be 8 in. (203 mm) on center and perimeter fasteners 4 in. (102 mm) on center.

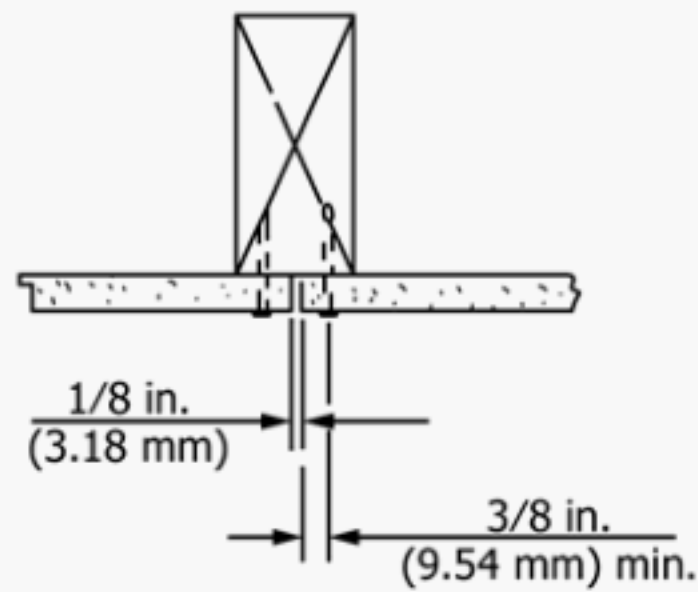
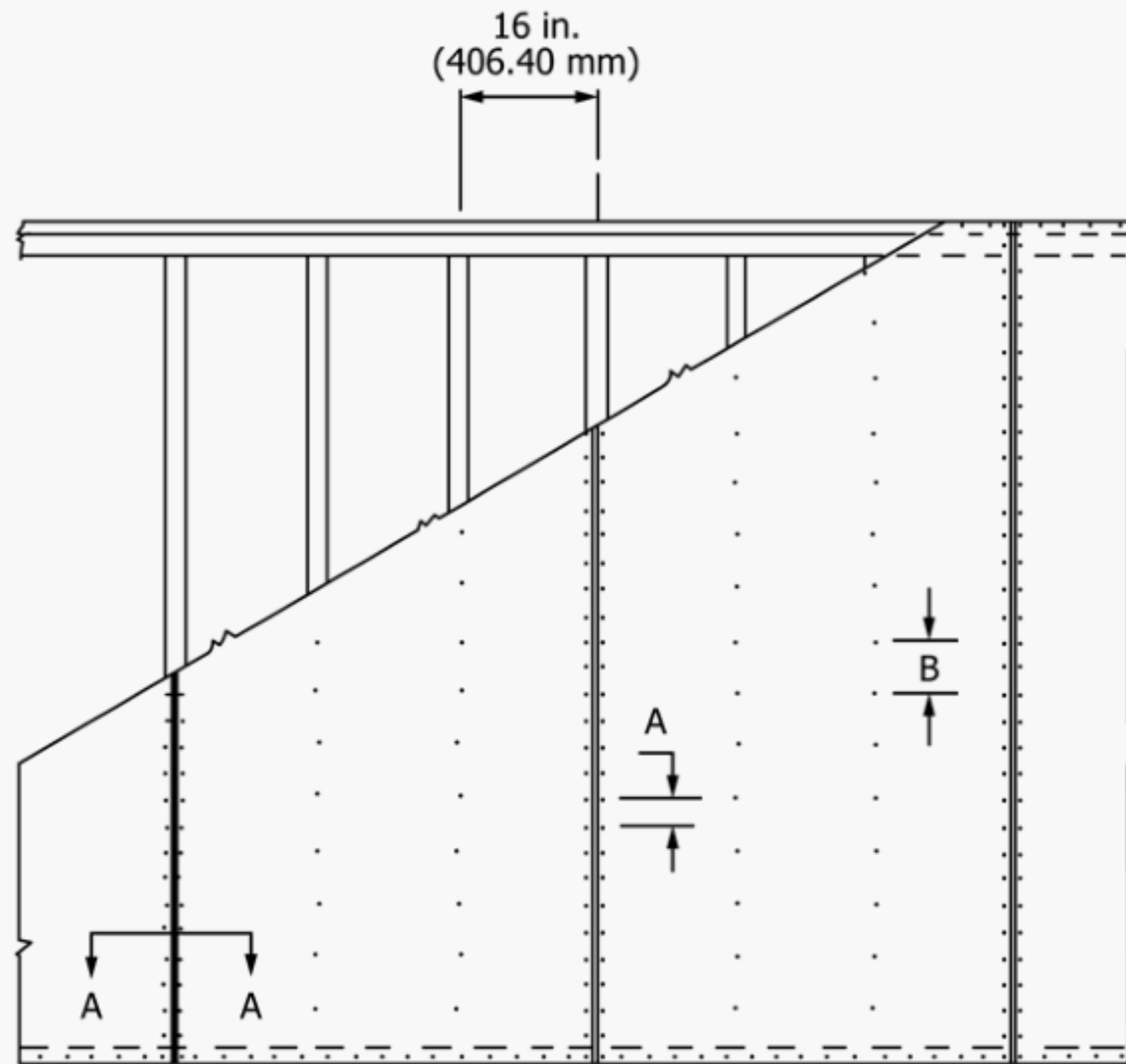
## 8. General Recommendations for Installing Exterior Finishes Over Sheathing

**8.1 Regular and Structural Wall Sheathing**—Fasten furring strips, stucco bases, etc., through the sheathing to the framing.

**8.1.1 Horizontal Lap Siding**—Apply directly over the sheathing and fasten to each stud. Nails must be long enough to penetrate the wood framing members at least 1 in. (25.4 mm)

**TABLE 2 Fastener Spacing**

Sheathing	Framing	Fastener Spacing, in. (mm) on Center	
		Intermediate Framing	Perimeter Framing
1/2 or 25/32 in. by 4 ft by 8 ft or 9 ft (12.7 or 19.8 mm by 1.22 m by 2.44 m or 2.74 m)	wood	6 (152)	3 (76)
1/2 or 25/32 in. by 4 ft by 8 ft or 9 ft (19.8 or 12.7 mm by 1.22 m by 2.44 m or 2.74 m)	metal	10 (254)	5 (127)
With separate bracing: 1/2 in. by 4 ft by 8 ft or 9 ft (12.7 mm by 1.22 m by 2.44 m or 2.74 m)	wood	8 (203)	4 (102)
25/32 in. by 4 ft by 8 ft or 9 ft (19.8 mm by 1.22 m by 2.44 m or 2.74 m)			



**SECT. A – A**

**Fastener Spacing**

	Nails, in. (mm)	Staples, in. (mm)	Screws, in. (mm)
A <sup>A</sup>	3 (76.20)	3 (76.20)	5 (127.00)
B <sup>A</sup>	6 (152.40)	6 (152.40)	10 (254.00)

<sup>A</sup>A = spacing on edges  
B = spacing in field

**FIG. 1 Vertical Application**

in accordance with the manufacturer's recommendations. All joints of siding should fall on the center of framing members.

8.1.2 *Vertical Wood Board Siding*—Fasten vertical siding and batten strips (if used) to horizontal members spaced not



over 24 in. (0.61 m) on center. Nails must penetrate the wood blocking not less than 1 in. (25.4 mm).

8.1.3 *Mineral Fiber Shingles*—Use  $\frac{3}{8}$ -in. (9.5-mm) by  $3\frac{1}{2}$ -in. (88.9-mm) or larger wood furring strips as nailing base secured to each stud. Nails must be long enough to penetrate 1 in. (25.4 mm) into the wood framing in accordance with the manufacturer's recommendations.

8.1.4 *Plywood and Hardboard Panel and Siding*—Apply directly over the sheathing and fasten to each framing member. Nails must be long enough to penetrate the wood framing members at least 1 in. (25.4 mm) in accordance with the manufacturer's recommendations.

8.1.5 *Wood Shingles*—Apply furring strips (nominal 1 by 2 in.) or larger horizontally over the sheathing and secure to each stud. Nails must be long enough to penetrate at least 1 in. (25.4 mm) into the wood framing. Space the furring strips the same distance, center to center, as the weather exposure of the shingles. Nail shingles to the furring strips in accordance with the shingle manufacturer's specifications.

8.1.6 *Stucco*—Cover the entire sheathing surface with a continuous layer of asphalt-impregnated, water-repellent paper weighing at least 10 lb/100 ft<sup>2</sup> (0.49 kg/m<sup>2</sup>). An alternative is Class D building paper meeting Federal Specification UU-B-

790-A or an equivalent weather resistant barrier. Do not use a vapor barrier such as coated roofing membrane. Head and side laps should be at least 4 in. (101.6 mm). Self-furring metal lath stucco bases (3.4 lb/yd<sup>2</sup>) (1.84 kg/m<sup>2</sup>) or equivalent may be applied directly over the building paper. If necessary, use strips of wood lath to make certain that there is at least  $\frac{3}{8}$  in. (9.5 mm) of clear space between the stucco base and the sheathing. Non-furring stucco bases such as diamond mesh metal lath should be nailed to nominal 1 by 2-in. wood furring strips applied vertically over the studs. All nailing of both furring strips and stucco base should be done with nails or staples that are long enough to extend through the sheathing and at least 1 in. (25.4 mm) into the wood framing.

8.1.7 *Masonry Veneer*—Attach metal ties for masonry veneer over the sheathing with nails that penetrate at least  $\frac{3}{4}$  in. (19.0 mm) into the wood framing members. At least 1 in. (25.4 mm) of clear space should be left between the sheathing and the back of the veneer.

## 9. Keywords

9.1 cellulosic fiberboard; cellulosic fiber insulating board; fiberboard; insulating board; regular wall sheathing; structural wall sheathing; wall sheathing

*ASTM International takes no position respecting the validity of any patent rights asserted in connection with any item mentioned in this standard. Users of this standard are expressly advised that determination of the validity of any such patent rights, and the risk of infringement of such rights, are entirely their own responsibility.*

*This standard is subject to revision at any time by the responsible technical committee and must be reviewed every five years and if not revised, either reapproved or withdrawn. Your comments are invited either for revision of this standard or for additional standards and should be addressed to ASTM International Headquarters. Your comments will receive careful consideration at a meeting of the responsible technical committee, which you may attend. If you feel that your comments have not received a fair hearing you should make your views known to the ASTM Committee on Standards, at the address shown below.*

*This standard is copyrighted by ASTM International, 100 Barr Harbor Drive, PO Box C700, West Conshohocken, PA 19428-2959, United States. Individual reprints (single or multiple copies) of this standard may be obtained by contacting ASTM at the above address or at 610-832-9585 (phone), 610-832-9555 (fax), or service@astm.org (e-mail); or through the ASTM website (www.astm.org). Permission rights to photocopy the standard may also be secured from the Copyright Clearance Center, 222 Rosewood Drive, Danvers, MA 01923, Tel: (978) 646-2600; <http://www.copyright.com/>*